



RowLock Bond Technology

Mason Training Board



Schweizerische Eidgenossenschaft
Confédération suisse
Confederazione Svizzera
Confederaziun svizra

**Swiss Agency for Development
and Cooperation SDC**

skat

Swiss Resource Centre and
Consultancies for Development

PROECCO **PRO**moting **E**mployment through
Climate Responsive **CO**nstruction

Row Lock Bond brick - Itafari rya Row Lock Bond

RLB bricks quality control and selection

Kugenzura no kurobanura ubwiza bwamatafari



Bad example - discard

Urugero rubi - Atemewe gukoreshwa

Check and select:

- size - tolerance $\pm 4\text{mm}$
- shape
- colour
- sound
- soak in water before using (min 2h)

Gusuzuma no kurobanura/
guhita

- ibipimo - ikinyuranyo cyemewe $\pm 4\text{mm}$
- ishusho/imimerere y'inyuma
- ibara
- ijwi
- kuyatumbika mumazi nibura amasaha abiri

Good example - select

Urugero rwiza - Kurobanura

4

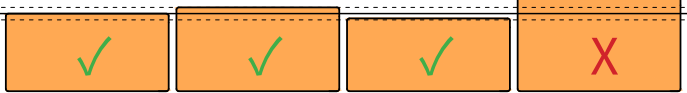
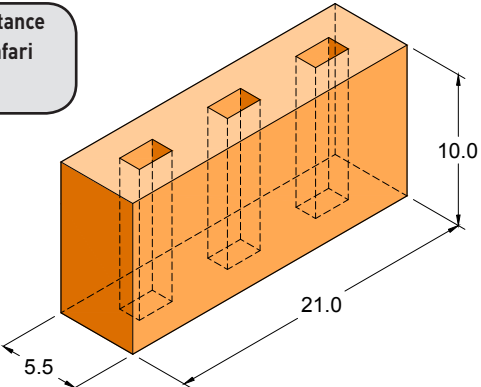
RLB brick:

Modern brick, precise dimensions, resistant to compression

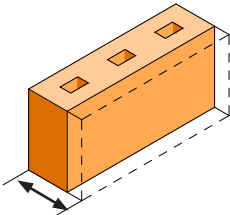
Itafari rya RLB:

Amatafari ya kijyambere, ibipimo byuzuye kandi akomeye

compression resistance
ubukomere bwitafari
10MPa



Brick size tolerance:
Ikinyuranyo cyemewe
cy'itafari:
 $\pm 4\text{mm}$



5

RLB wall construction checklist:

- keep joint size = 1cm
- add DPL
- build around re-bars
- check joints size/align.
- integrate MEP
- carefully compact concrete by hand
- keep cavities clean
- keep brick wall clean at all times

Amabwiriza yo kubaka urukuta rwa
RLB:

- kutarenza ijuwe = 1cm
- gushyiramo agashashi/umwenda utuma amazi atazamuka mu rukuta/rufingi
- kubakira kuri ferabeto
- gusuzuma ibipimo bya juwe no kuzirebanisha
- kubaka bashyiramo amatiyo y'amazi n'amashanyarazi
- gutsindagirana beto ubushishozi hakore shejwe intoki na fera beto yabugenewe
- kudashyira sima mu myenge/umwanya y'urukuta
- urukuta rugomba kuba rusa neza igihe cyose



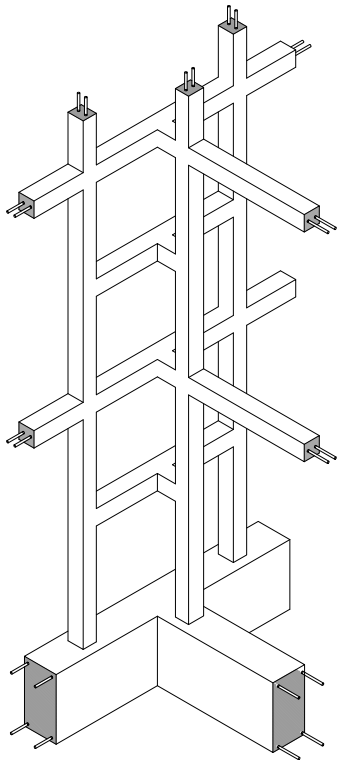
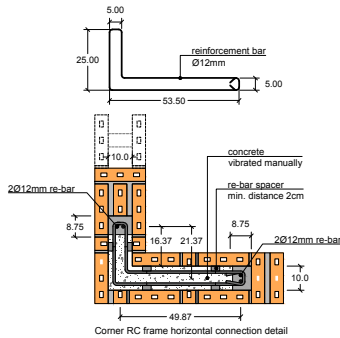
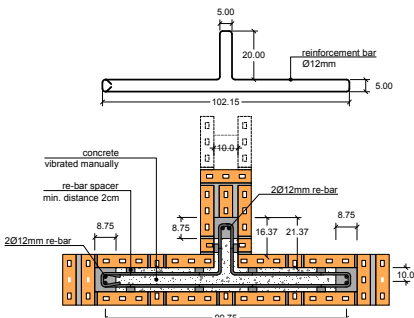
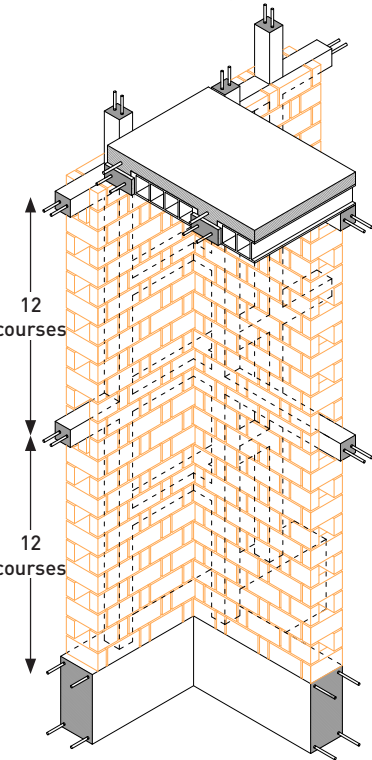
Row Lock Bond wall - Urukuta rwa Row Lock Bond

6

RLB horizontal and vertical structural reinforcement:

2 rebars diameter 12mm, stirrups diameter 8mm @ 20mm, follow architectural and structural plans for positioning. The size of the re-bars must be verified by a structural engineer.

Ikorone zihagaze n'izitambitse (colone na putere) mu rukuta bikomeza inyubako: ferabeto ebyiri za mm12, etiriye za mm8 mu ntera ya mm20 ($\varnothing 8\text{mm}$ @ 20mm) hakurikijwe ibishushanyo by'inzu n'uko ibyuma bigomba kuzingwa. Uko ibyuma bizinze n'umurambararo wabyo bigenzurwa n'umwenzanyeri wabyigiyeye.



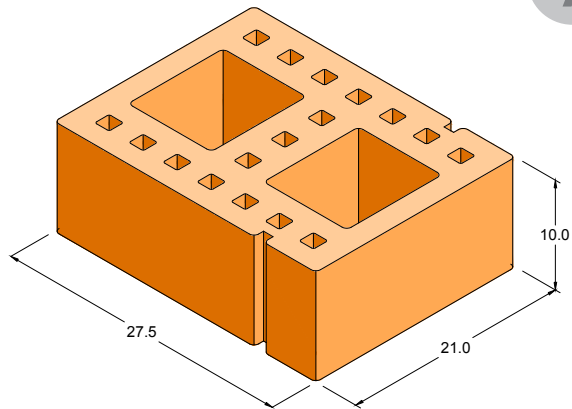
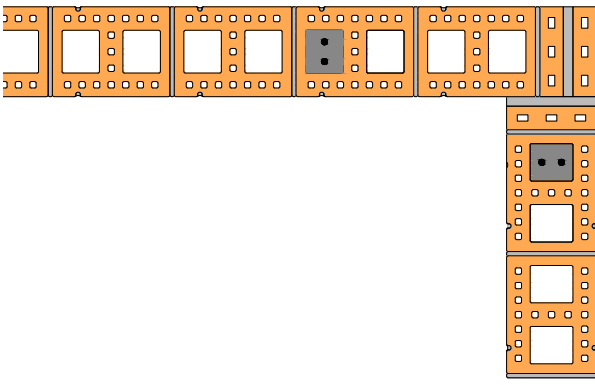
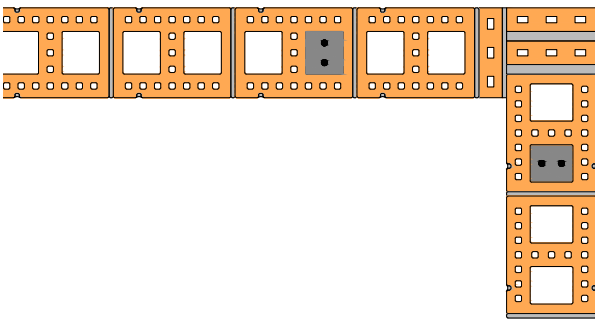
PLANFILL block - Amatafari yama boroke (PLAN-FILL)

RLB plafill block:

Equal to 3 bricks, faster construction

Boroke ya RLB:

Ingana namatafari atatu ya RLB, kuyubaka birihuta



7

Tie beams - Putere izirika inzu/lento



8

Tie beams/lintel beams and columns construction:

Reinforcement 2x12mm rebars, stirrups 6mm@20cm
The size of the re-bars must be verified by a structural engineer.

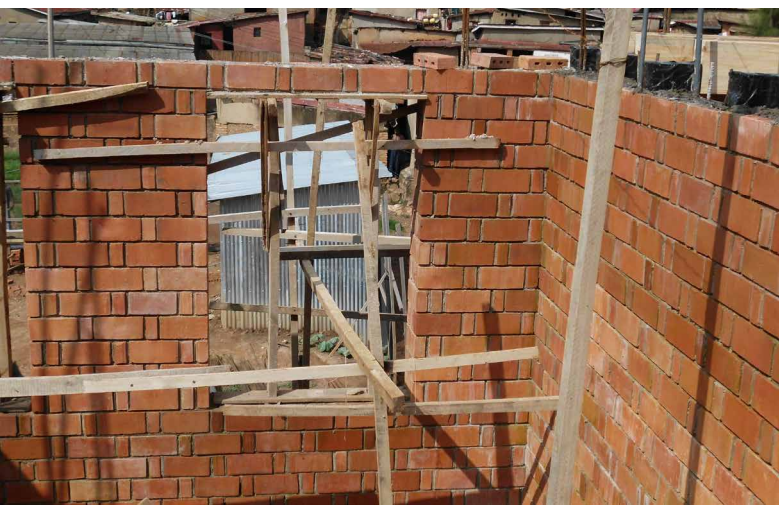
Kubaka putere yo kuzirika inzu/putere ya rento na kolone: Ibyuma bibiri bya mm12, etiriye za mm 6 mu ntera ya mm20. Umurambararo n'uko ibyuma biboshye, bigomba kugenzurwa n'umwenzanyeri wabyigaye.

Check and select:

- Close cavity with discarded bricks
- Build the brick formwork
- Keep formwork cavity clean
- Add reinforcement as per structural specs.
- Minimum curing time for the formwork:12 hours
- Pour concrete and compact manually
- Windows/doors formwork to be removed after 28 days
- Always keep walls clean while pouring concrete

Suzuma unarobanure / Gutoranya:

- Gufunga umwanya wo murukuta n'amatafari mabi/amadeshi
- Kubaka kofurage (coffrage) y'amatafari
- Kofurage igomba kuba isa neza, nta bisima birimo
- Gushyiramo ibyuma/ferabeto hagendewe ku bishushanyo n'amabwiriza y'ubwubatsi
- Igihe gito kugirango kofurage y'amatafari ibe ikomeye n'amasaha cumi n'abiri (12h)
- Kumena beto no kuyitsindagira n'amaboko hakoreshejwe iferebeto
- Kofurage yo ku nzugi no ku madirishya ikurwaho nyuma y'iminsi 28
- igihe cyose irinde kwanduza urukuta mu gihe harimo kumenwa beto



Windows/Doors installation - Gukinga inzugi n'amadirishya

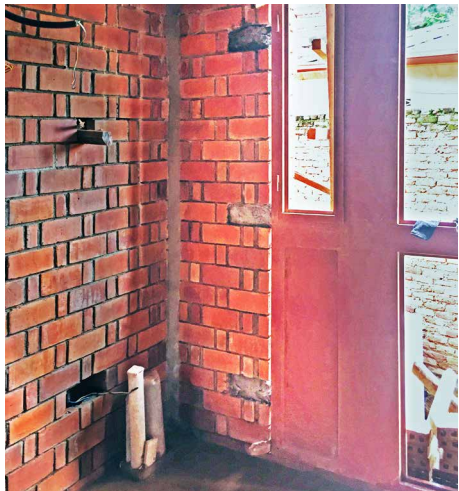
9

Checklist

- remove stretcher brick at specific heights
- install door/window
- check levels/alignments
- fill cavity with concrete and replace stretcher bricks

Gusuzuma no kurobanura / Gutoranya:

- gukuramo ku burebure bwagenwe amatafari ya panderesi
- gushyiramo/gukinga idirishya /urugi
- gusuzuma umunyoroko n'indara
- gufunga amadogi na beton no kongera kushyiraho itafari rya panderesi



Electrical/Plumbing fixtures - Ibikoresho by'amashanyarazi n'amazi

10



Checklist

- mark position of conduits/pipes during wall construction with marked bricks/discarded bricks
- when installing the fixture, remove marked stretcher brick
- align sockets/switches and check level

Kugenzura no guhitamo :

- kugaragaza ahazaca umuyoboro/amatiyo mu kubaka urukuta hakoreshejwe itafari ririho iki-menyetso cg risimbuzwa nyuma
- kukura mu rukuta itafari rifite ikimenyetso mu gihe cyo gushiramo ibikoresho by'amashanyarazi (inteributeri/purise)
- gushyira purize /inteributeri ku murongo umwe no gusuzuma ko biri kundara imwe

Wall cleaning - Isuku y'urukuta

11



Checklist

- keep walls as clean as possible at all times.
- in order to remove cement marks and smudges clean bricks with a mixture of water and vinegar

Isuku y'urukuta

- urukuta rugomba guhora rusa neza
- mu gihe hari isima yanze kuva ku rukuta rusukurwa hifashishijwe amazi avanze na vinegere



12

TIMBER Slab - Dare y'imbaho

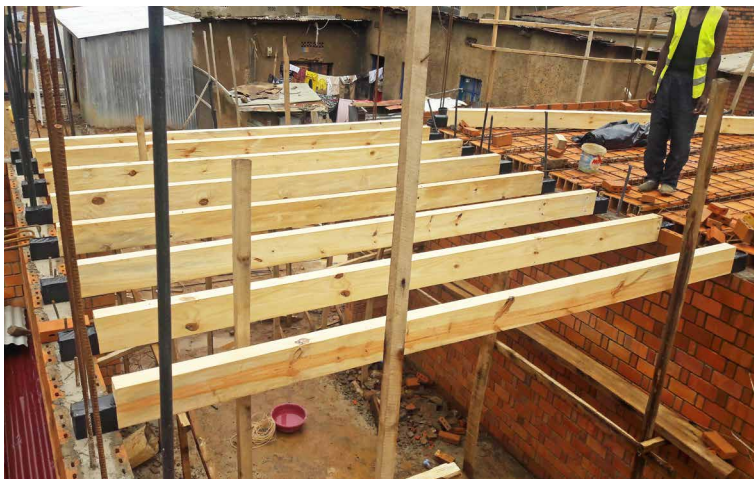
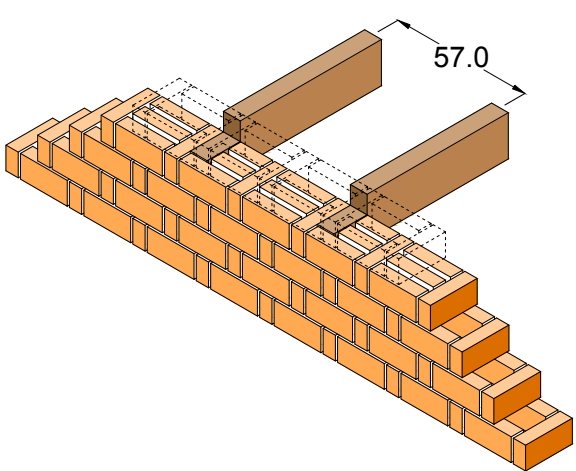
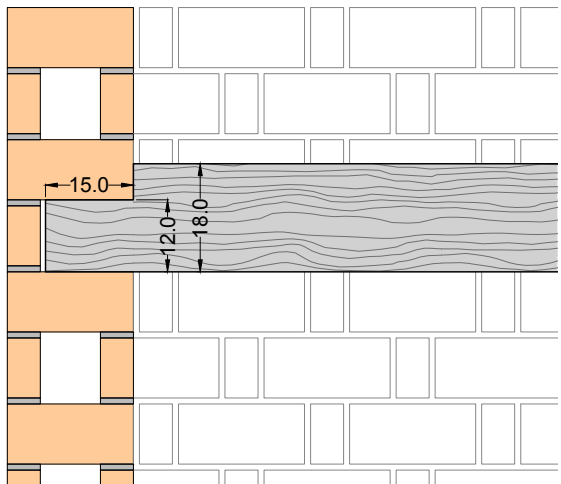


Timber beam checklist:

- timber quality
- moisture content ($\leq 15\%$)
- imperfections and cracks
- treat with anti-termite before using
- protect ends before installing

Amabwiriza kuri dare y'ibiti:

- ubwiza bw'urubaho
- urugero rwo kuma (moisture content, $\leq 15\%$)
- kuba rumaze nabi cyangwa rufite imitutu/imisate
- kurusiga umuti urwanya umuswa/imungu mbere yo kurukoresha
- gufunika imitwe mbere yo gukoresha putere y'urubaho



13

MAXSPAN in-situ SLAB - Dare ya hurudi

Reinforced concrete beams (or ribs) and top 4cm thick screed cast in-situ within MAXSPAN clay pot rows.
The reinforcement and the MAXSPANs are placed on the formwork and connected to the wall structure prior to casting the concrete.

*Putere za beton na couche yo hejuru ya beton ifite umubyimba wa cm 4 bimen-
erwa beto mu myanya babyo (cast in-situ) hamwe na za hurudi. Ibyuma na hurudi
bishyirwa kuri cofuraje bikanafatanywa n'urukuta rw'amatafari mbere yo kume-
na beto.*



IN-SITU MAXSPAN slab checklist:

- mount the timber formwork
- place the beams reinforcements and connect them the wall tie-beam waiting bars
- add spacers to the reinforcement bars
- position the MAXSPAN clay pots in between the reinforcement bars
- check levels and alignments
- add top screed wire mesh within the beams reinforcements
- add spacers underneath the screed mesh
- cast the concrete beams and top screed at the same time
- complete the slab by finishing the top concrete surface according to the desired finish level
- remove formwork only after 28 days

Amabwiriza ya dare ya hurudi bameneyeho (in-situ):

- kubaka kofuraje y'ibiti
- gushyiraho ibyuma bya putere no kubihuza /kubifatanya nibyo muri put-
ere/korone zo mu rukuta
- gushyira karabeto mu byuma
- gushyira hurudi hagati y'ibyuma
- gusuzuma indara no kuzinyorosha/kuzishyira kumurongo
- gushyiraho agatanda ko hejuru k'ibyuma kakanafata n'ibyuma bya putere
- gushyira karabeto munsu yagatanda k'ibyuma /hagati y'agatanda na
hurudi
- kumena beto ya za putere niyagatanda ko hejuru icyarimwe
- kurangiza kumena beto hakorwa na finisaje bitewe n'urugero rwa finisaje
yifuzwa
- gukuraho igikwa/Kofuraje nibura nyuma y'iminsi 28



MAXSPAN precast SLAB: the precast beams - Dare ya Hurudi - putere zarakozwe mbere

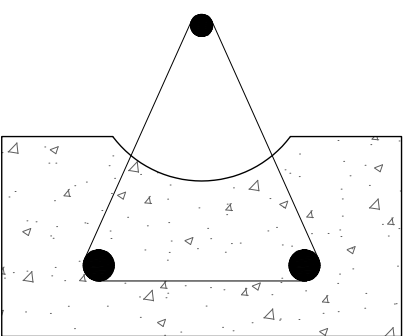


PRECAST BEAMS checklist:

- position the metallic formworks on an even surface
- double check leveling
- cut, bend and tie together re-bars and stirrups as per structural specifications
- position the reinforcement bars
- the size of the bars must be confirmed by a structural engineer
- add concrete spacers below and side of the re-bars
- cast the concrete and vibrate with a mechanical vibrator
- scratch portion of the concrete below the top re-bar
- remove from formwork only after 14 days and use only after 28 days

Amabwiriza kuri PUTERE ZAKOZWE MBERE

- gushyira iforomo zibyuma ahantu haringaniye
- kongera gusuzuma indara
- gukata no kuzinga ibyuma hakurikijwe ibishushanyo byagenwe
- gushyira ibyuma mu myanya yabyo
- umurambararo n'uko ibyuma bizingwa byemezwa n'umwenganyeri ubizobereye
- gushyira karabeto muni no kumpande zibyuma
- kumena beto igatsindagirwa hakoreshejwe imashini
- gukuraho beto yo hejuru hagasigara hataringaniye kugirango izahure nindi neza
- putere bayikura mwiforomo nibura nyuma y'iminsi 7, nanone ibishobora kuzamurwa hejuru nibura nyuma y'iminsi 14 ariko igakomeza itezwe nibikwa.



Maxspan pre-cast beam section

kupe ya dare ya hurudi kuri putere zarakozwe mbere



MAXSPAN precast SLAB

Dare ya Hurudi - putere zarakozwe mbere

Dry installation of pre-cast reinforced concrete beams and MAXSPAN clay pots.

The slab is then finished with 4cm of concrete screed.

Gushyira putere zakozwe mbere mu myanya yazo hanyuma ugashiraho hurudi. Gushyiraho agatanda ko hejuru kibyuma hanyuma dare ikarangizwa no kumena beto ifite cm 4 na finisaje.

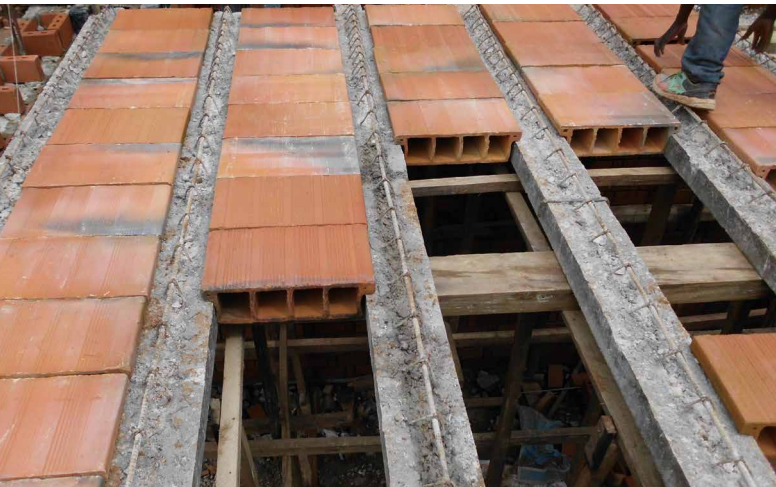


PRECAST SLAB checklist:

- mount the timber formwork
- hoist the pre-cast beams over formwork
- place MAXSPAN clay pots and check alignments
- add top screed wire mesh within the beams reinforcements
- add spacers underneath the screed mesh
- cast the top concrete screed
- complete the slab by finishing the top concrete surface according to the desired finish level
- remove formwork only after 28 days

Amabwiriza kuri Dare ya Hurudi

- kubaka cofuraje mu biti (gutega dare)
- kuzamura putere hejuru kuri kofuraje
- gushyiraho urudi hakanagenzurwa ko ziri kumurongo umwe
- gushyiraho agatanda kibyuma ko hejuru kakanafatana n'ibyuma bya putere
- gushyira karabeto muni yagatanda k'ibyuma
- kumena beto ya kushe yo hejuru
- dare irangira hakorwa finisaje ya kushe yo hejuru nanone bitewe n'urugero finisaje ikenehweho
- kofurage ikurwaho nibura nyuma y'iminsi 28

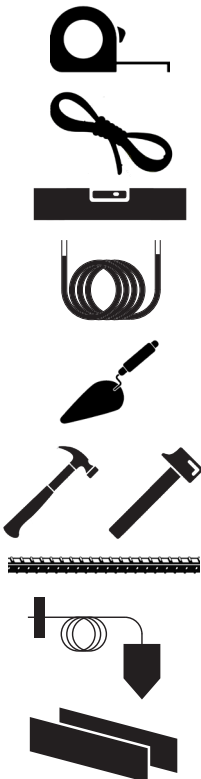


1

Use safety equipment at all times. Always use the tools in the toolbox for optimal results.
Koresha ibikoresho by'ubwirinzi igihe cyose. Koresha ibikoresho by'umufundi igihe cyose kandi neza ku-girango wubake neza kandi ubone umubyizi ushimishije.

TOOLBOX - Ibikoresho by'umufundi

- Tape measure - Imetero
- Strings - Ikamba
- Spirit level - Nivo yamazi
- Water hose level - Nivo yumupira
- Trowel - Umwiko
- Hammers - Inyundo
- 1cm re-bar - Ferabeto yicumi ya juwe
- Plummet - Firaporo (fil a plomp)
- Timber boards - Akabaho kabuza sima kugwa mu myenge yo mu rukuta



SAFETY EQUIPMENT - Ibikoresho byubwirinzi

- Helmet - Ingofero
- Overall - Isarubeti/itaburiya
- Safety boots - Inkweto zubwirinzi
- Gloves - Gants (ga)
- Mask - Masiki/Agapfukamunwa
- Goggles - Amataratara/Amadarubindi yo kurinda amaso
- First aid kit - Agasanduku kibikoresho byubutabazi



SETTING OUT - GUPIMA INZU



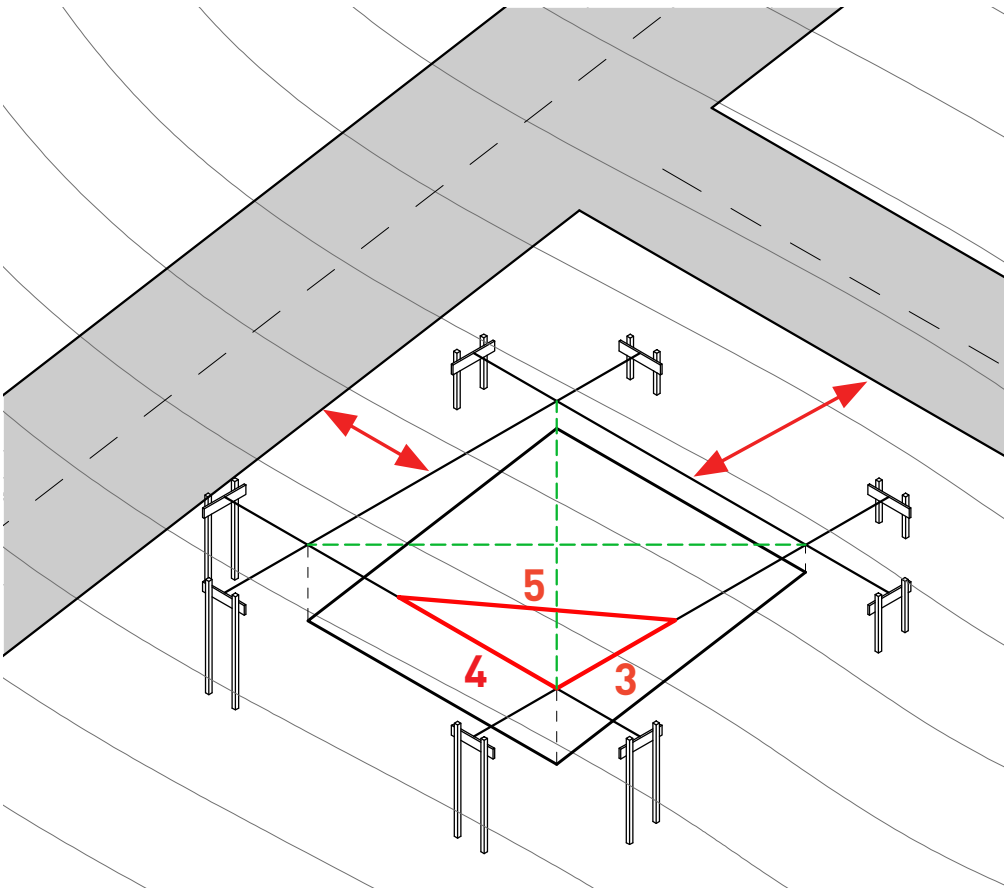
2

Set benchmark

- verify distance to boundaries
- consider existing infrastructure (electrical, plumbing)
- read drawings carefully

Gushyiraho /kugaragaza ifatizo:

- gupima uherye ku mbago /ku ifatizo
- kwita kubikorwa remezo bihari(amazi, amashanyarazi, imiyoboro ya murandasi nibindi..)
- gusoma neza ibishushanyo by'ubwubatsi



3

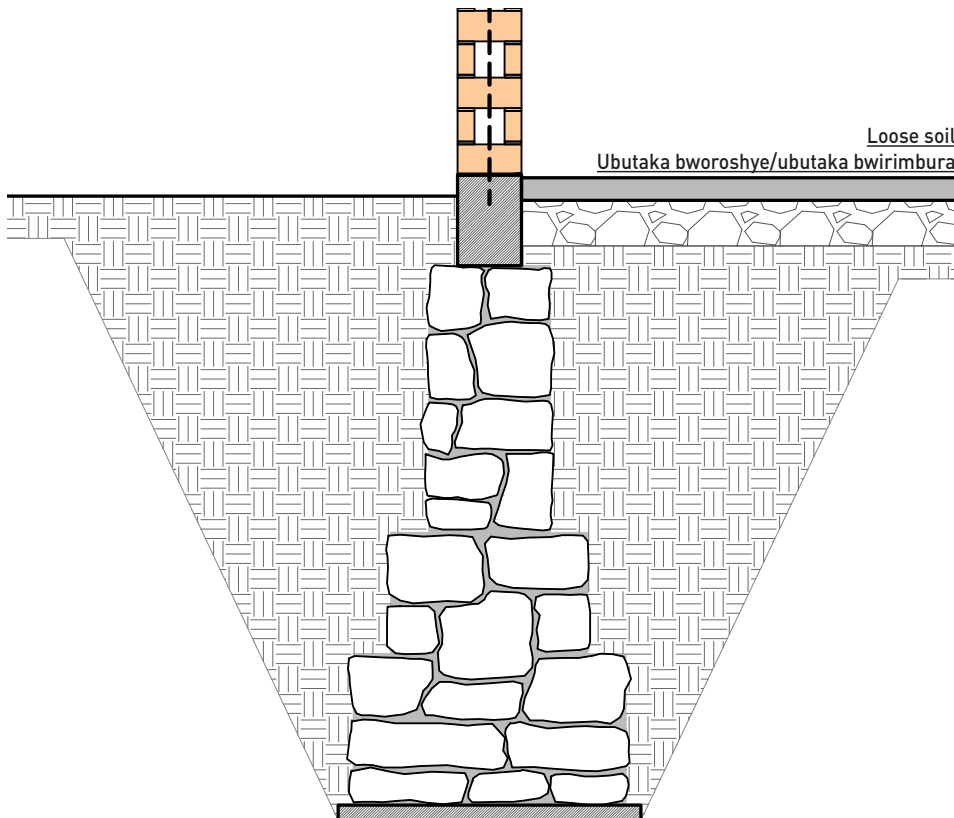
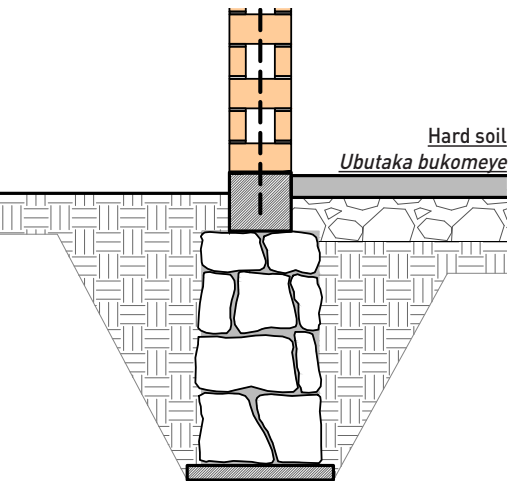
FOUNDATION - FONDASIYO

Foundation components:

- concrete blinding (thickness 5cm)
- stone masonry foundation up to resistant soil
- reinforced concrete ground beam
- embed vertical re-bars as per structural design
- add drainage pipe in case of rising underground water table

Ibice bigize fondasiyo

- Beto y'isuku (umubyimba wa cm 5)
- Fondation y'amabuye uherye ku butaka bukomeye
- Rongirine (Longrine)
- Ibyuma bihagaze bya colone bifatira muri rongirine
- Amatiyo ayobora amazi ahari amasoko cg amazi yo mu kuzimu azamuka



4

Row Lock Bond wall - Urukuta rwa Row Lock Bond

RLB bricks quality control and selection

Kugenzura no kurobanura ubwiza bwamatafari

Check and select:

- size - tolerance +-4mm
- shape
- colour
- sound
- soak in water before using (min 2h)

Gusuzuma no kurobanura/guhitamo

- ibipimo - ikinyuranyo cyemewe +-4mm
- ishusho/imimerere y'imyuma
- ibara
- ijwi
- kuyatumbika mumazi nibura amasaha abiri

Bad example - discard

Urugero rubi - Atemewe gukoreshwa



Good example - select

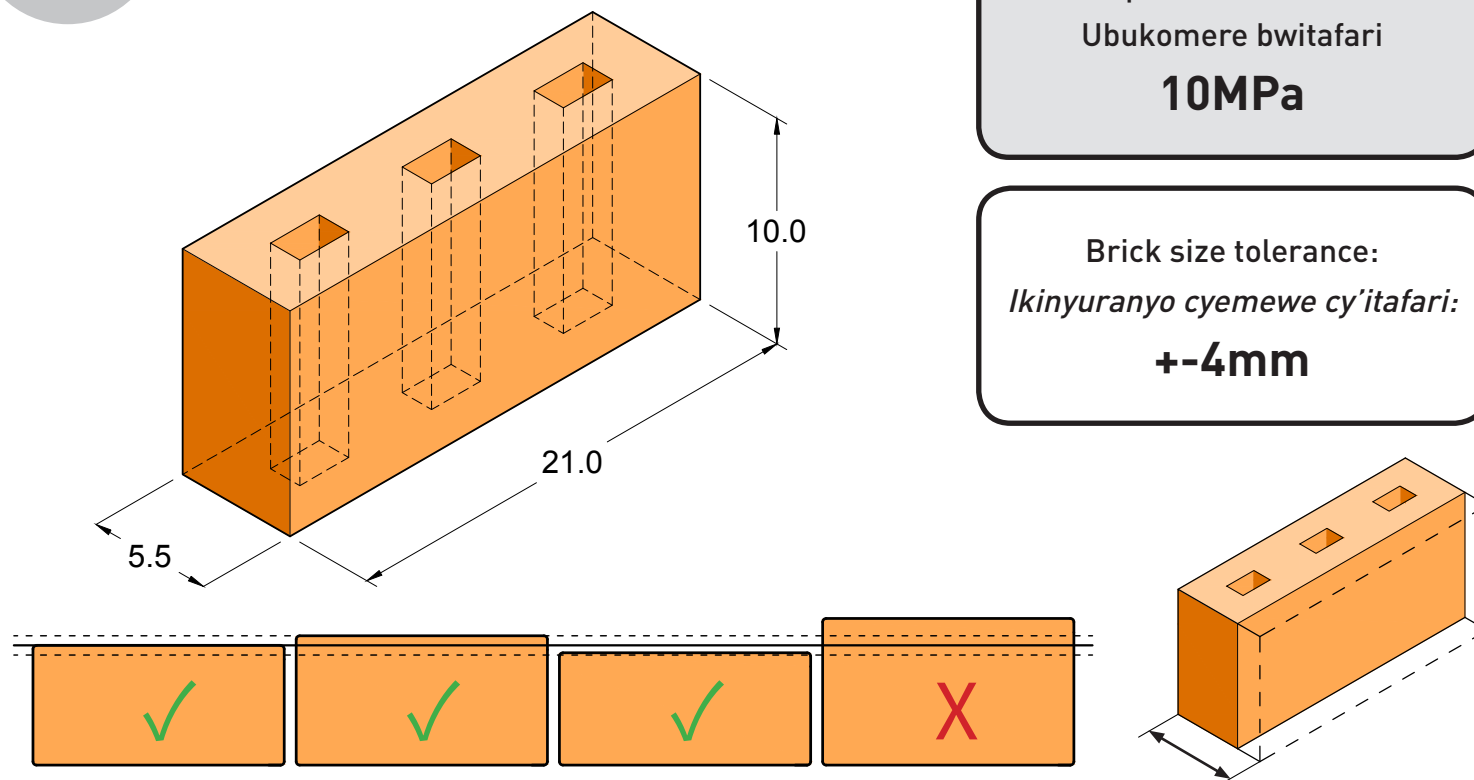
Urugero rwiza - Kurobanura



5

Row Lock Bond wall: BRICK - *Urukuta rwa Row Lock Bond: Itafari rya RLB*

Modern brick, precise dimensions, resistant to compression
Amatafari ya kiyambere, ibipimo byuzuye kandi akomeye



Compression resistance
Ubukomere bwitafari
10MPa

Brick size tolerance:
Ikinyuranyo cyemewe cy'itafari:
+/-4mm

RLB wall construction checklist:

- keep joint size = 1cm
- add damp proof layer (DPL)
- build around vertical re-bars
- check joints size/align.
- integrate MEP
- carefully compact concrete by hand
- keep cavities clean
- keep brick wall clean at all times

Amabwiriza yo kubaka urukuta rwa RLB:

- *kutarenza ijuwe= cm1*
- *gushyiramo agashashi/umwenda utuma amazi atazamuka mu rukuta/rufingi*
- *kubakira kuri ferabeto*
- *gusuzuma ibipimo bya juwe no kuzirebanisha*
- *kubaka bashyiramo amatiyo y'amazi n'amashanyarazi*
- *gutsindagirana beto ubushishozi hakoreshejwe intoki na fera beto yabugenewe*
- *kudashyira sima mu myenge/umwanya y'urukuta*
- *urukuta rugomba kuba rusa neza igihe cyose*

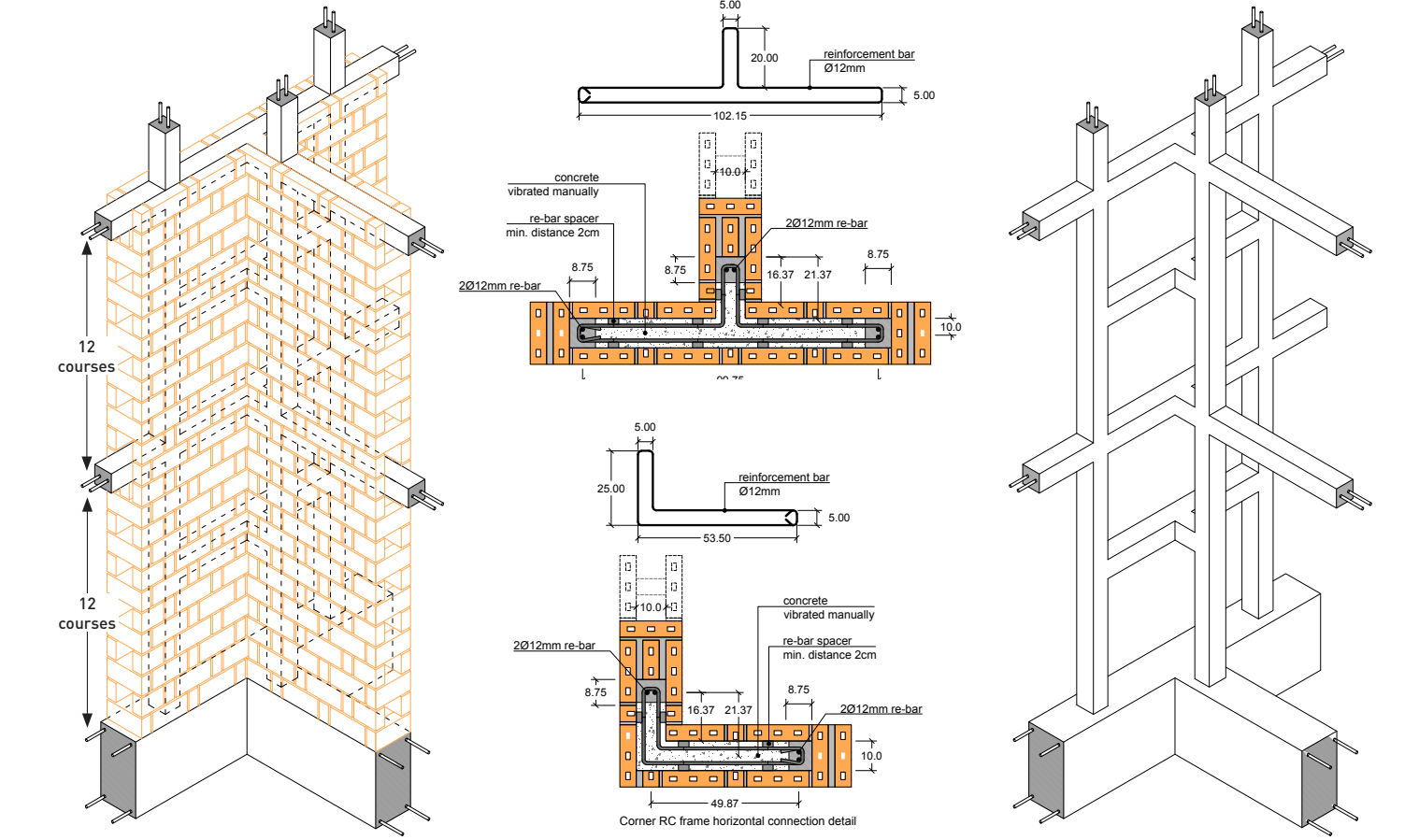


6

Row Lock Bond wall - Kinyarwanda

RLB horizontal and vertical structural reinforcement:
2 rebars diameter 12mm, stirrups diameter 8mm @ 20mm, follow architectural and structural plans for positioning. The size of the re-bars must be verified by a structural engineer.

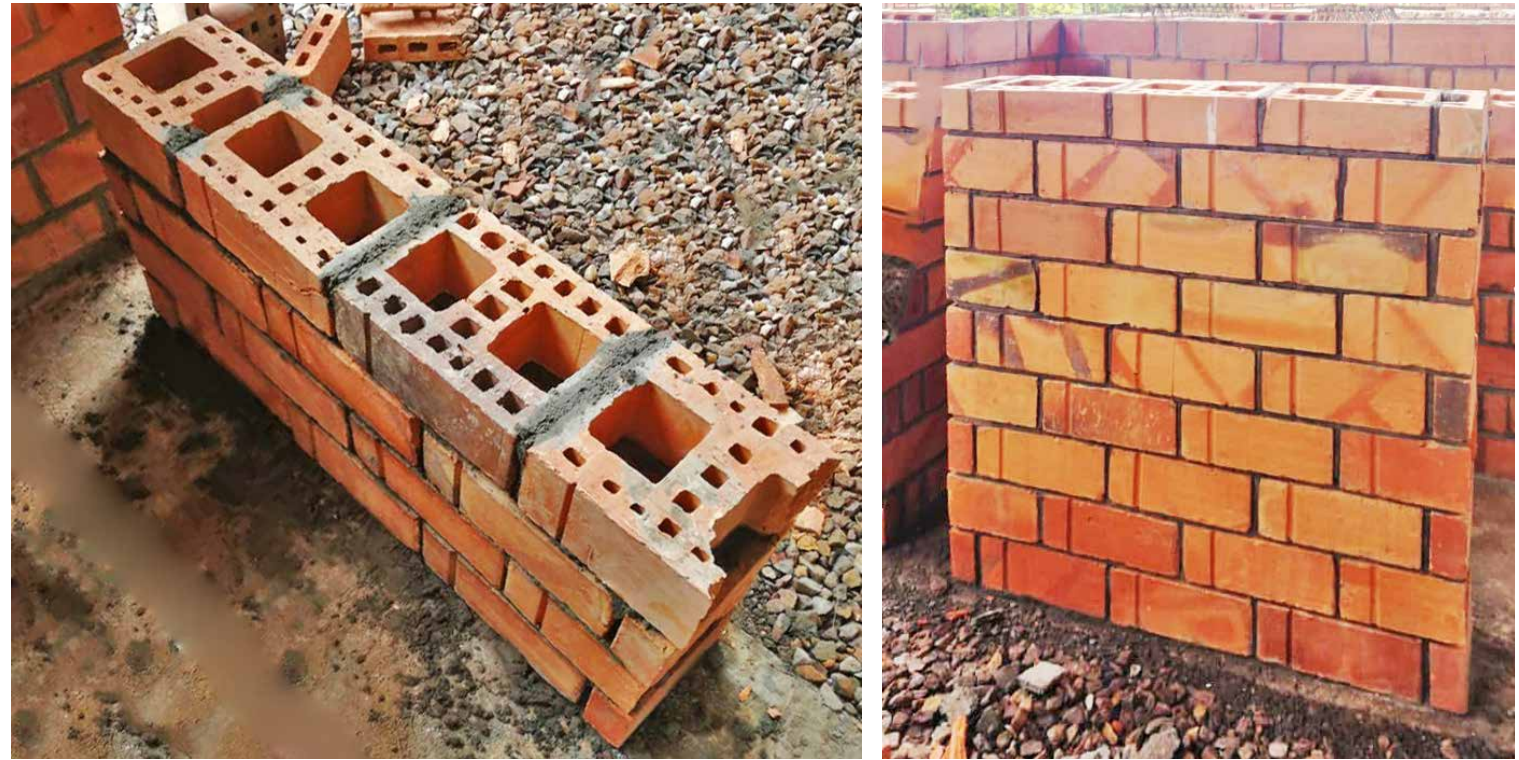
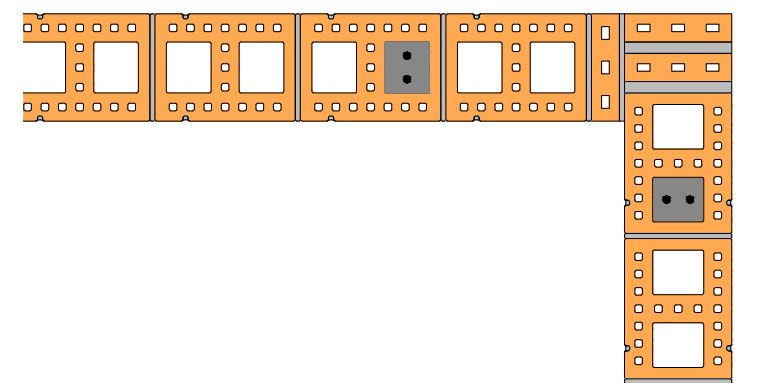
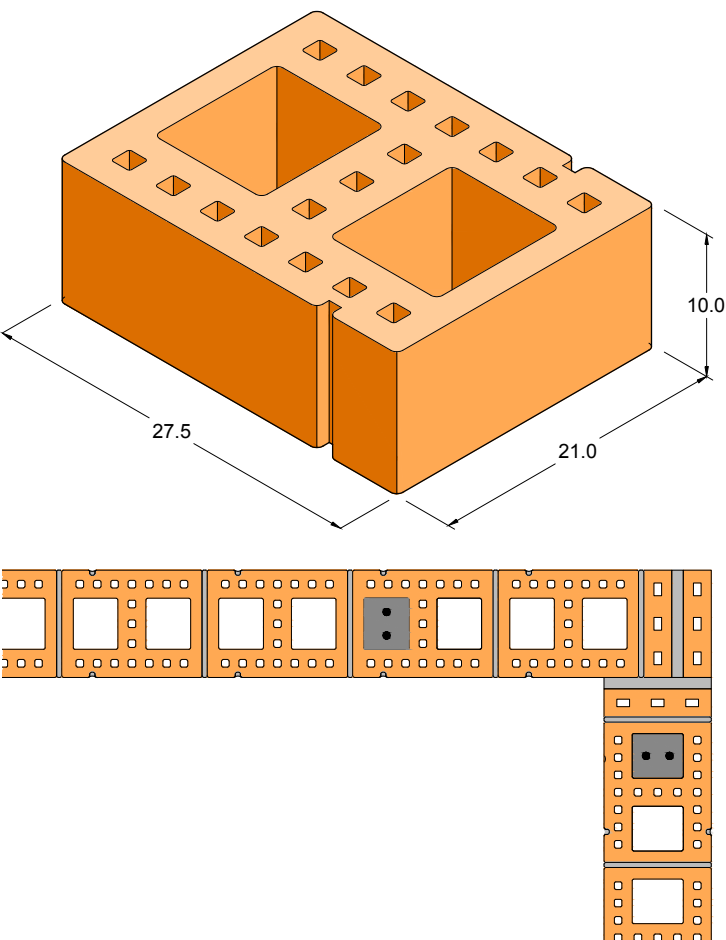
Ikorone zihagaze n'izitambitse (colone na putere) mu rukuta bikomeza inyubako:
ferabeto ebyiri za mm12, etiriye za mm8 mu ntera ya mm20 (Ø8mm @ 20mm) hakurikijwe ibishushanyo by'inzu n'uko ibyuma bigomba kuzingwa. Uko ibyuma bizinze n'umurambararo wabyo bigenzurwa n'umwenjyenyi wabyigiyiye.



7

PLANFILL block - Amatafari yama boroke (PLAN-FILL)

RLB plafill block:
Equal to 3 bricks, faster construction
Boroke ya RLB:
Ingana namatafari atatu ya RLB, kuyubaka birihuta



8

Tie beams - Putere izirika inzu/lento

Tie beams/lintel beams and columns construction:

Reinforcement 2x12mm rebars, stirrups 6mm @20cm. The size of the re-bars must be verified by a structural engineer.

Kubaka putere yo kuzirika inzu/putere ya rento na kolone:

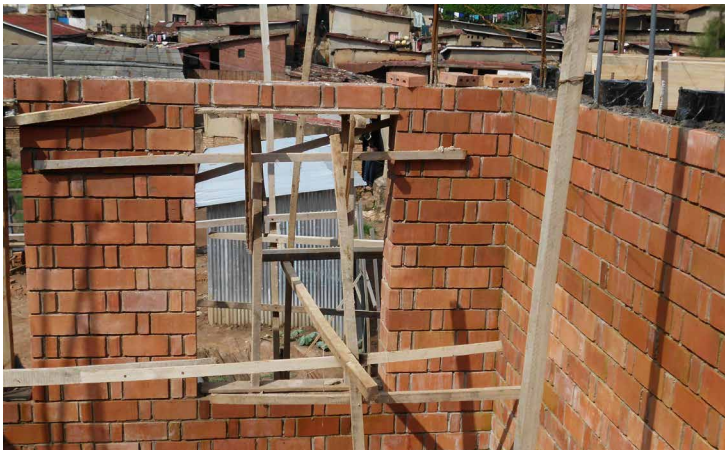
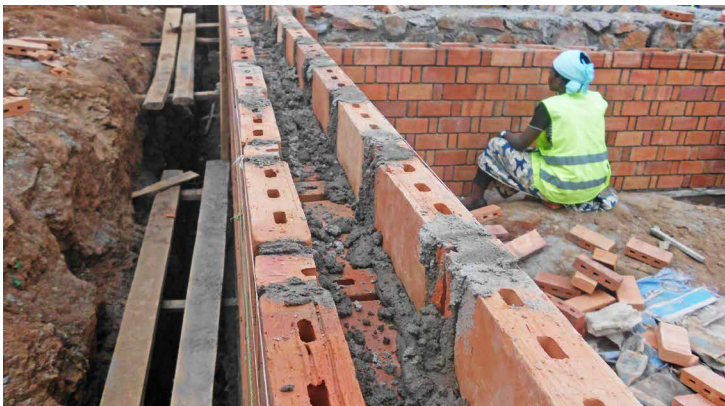
Ibyuma bibiri bya mm12, etiriye za mm 6 mu ntera ya mm20. Umurambararo n'uko ibyuma biboshye, bigomba kugenzurwa n'umwenzanyeri wabyigiyeye.

Check and select:

- Close cavity with discarded bricks
- Build the brick formwork
- Keep formwork cavity clean
- Add reinforcement as per structural specs.
- Minimum curing time for the formwork:12 hours
- Pour concrete and compact manually
- Windows/doors formwork to be removed after 28 days
- Always keep walls clean while pouring concrete

Suzuma unarobanure / Gutoranya:

- Gufunga umwanya wo murukuta n'amatafari mabi/amadeshi
- Kubaka kofurage (coffrage) y'amatafari
- Kofurage igomba kuba isa neza ,nta bisima birimo
- Gushyiramo ibyuma/ferabeto hagendewe ku bishushanyo n'amabwiriza y'ubwubatsi
- Igihe gito kugirango kofurage y'amatafari ibe ikomeye n'amasaha cumi n'abiri (12h)
- Kumena beto no kuyitsindagira n'amaboko hakoreshejwe iferebeto
- Kofurage yo ku nzugi no ku madirishya ikurwaho nyuma y'iminsi 28
- igihe cyose irinde kwanduza urukuta mu gihe harimo kumenwa beto



9

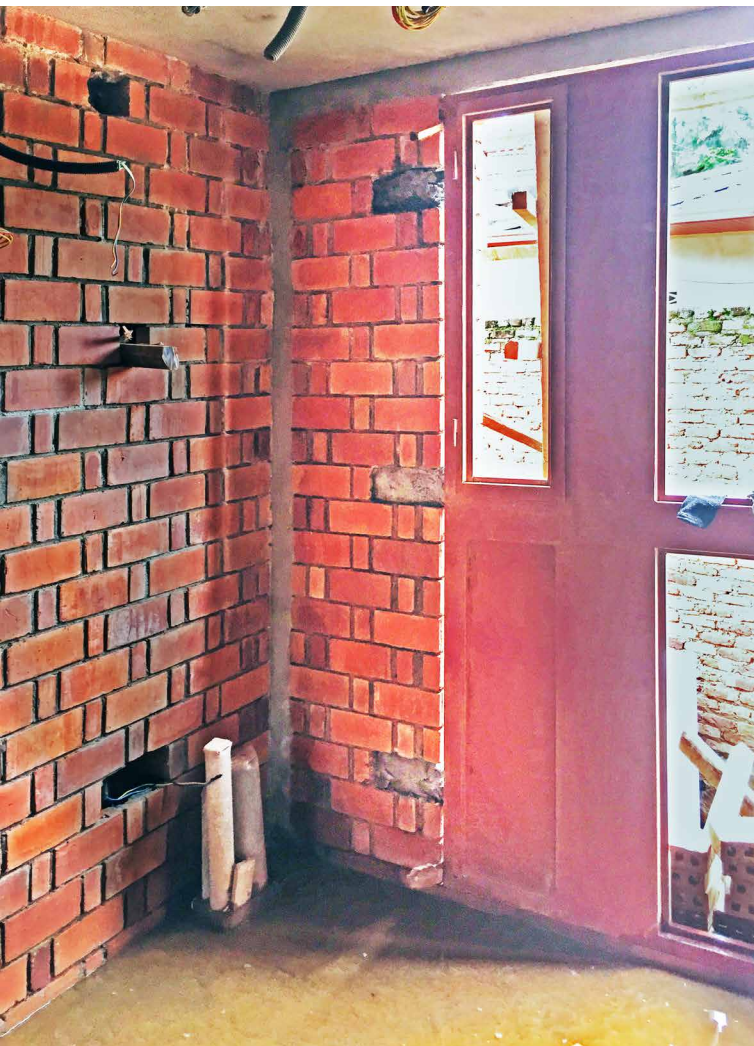
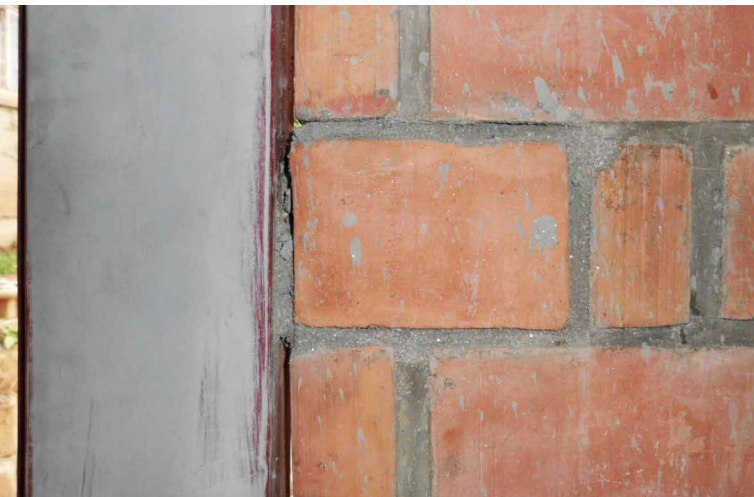
Windows/Doors installation - Gukinga inzugi n'amadirishya

Checklist

- remove stretcher brick at specific heights
- install door/window
- check levels/alignments
- fill cavity with concrete and replace stretcher bricks

Gusuzuma no kurobanura / Gutoranya:

- gukuramo ku burebure bwagenwe amatafari ya panderesi
- gushyiramo/gukinga idirishya /urugi
- gusuzuma umunyoroko n'indara
- gufunga amadogi na beton no kongera kushyiraho itafari rya panderesi





10

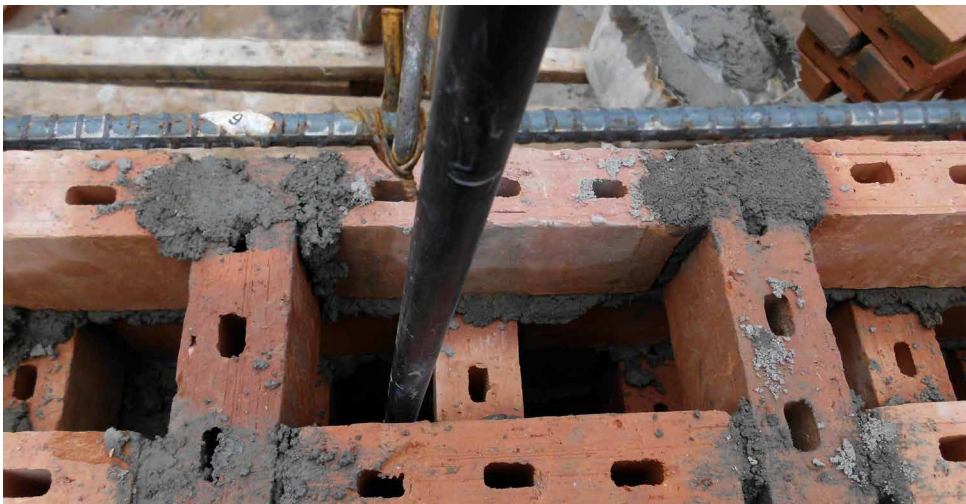
Electrical/Plumbing fixtures - Ibikoresho by'amashanyarazi n'amazi

Checklist

- mark position of conduits/pipes during wall construction with marked bricks/discarded bricks
- when installing the fixture, remove marked stretcher brick
- align sockets/switches and check level

Kugenzura no guhitamo:

- kugaragaza ahazaca umuyoboro/amatiyo mu kubaka urukuta hakoreshejwe itafari ririho ikimenyetso cg risimbuzwa nyuma
- gukura mu rukuta itafari rifite ikimenyetso mu gihe cyo gushiramo ibikoresho by'amashanyarazi (inteributeri/ purise)
- gushyira purize /inteributeri ku murongo umwe no gusuzu- ma ko biri kundara imwe



11

Wall cleaning - Isuku y'urukuta

Checklist

- keep walls as clean as possible at all times.
- in order to remove cement marks and smudges clean bricks with a mixture of water and vinegar

Isuku y'urukuta

- urukuta rugomba guhora rusa neza
- mu gihe hari isima yanze kuva ku rukuta rusukurwa hifashishijwe amazi avanze na vinegere



12

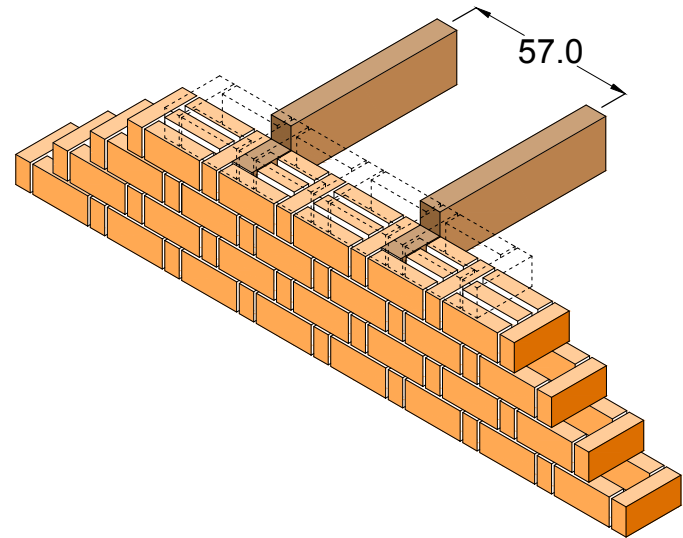
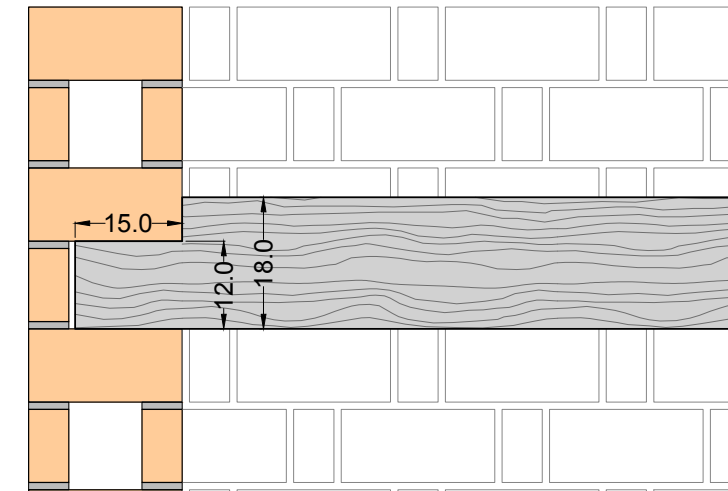
TIMBER Slab - Dare y'imbaho

Timber beam checklist:

- timber quality
- moisture content ($\leq 15\%$)
- imperfections and cracks
- treat with anti-termite before using
- protect ends before installing

Amabwiriza kuri dare y'ibiti:

- ubwiza bw'urubaho
- urugero rwo kuma (moisture content, $\leq 15\%$)
- kuba rumeze nabi cyangwa rufite imitutu/imi-sate
- kurusiga umuti urwanya umuswa/imungu mbere yo kurukoresha
- gufunika imitwe mbere yo gukoresha putere y'urubaho



13

MAXSPAN in-situ SLAB - Dare ya hurudi

Reinforced concrete beams (or ribs) and top 4cm thick screed cast in-situ within MAXSPAN clay pot rows. The reinforcement and the MAXSPANs are placed on the formwork and connected to the wall structure prior to casting the concrete.

Putere za beton na couche yo hejuru ya beton ifite umubyimba wa cm 4 bimenerwa beto mu myanya babyo (cast in-situ) hamwe na za hurudi. Ibyuma na hurudi bishyirwa kuri cofuraje bikanafatanywa n'urukuta rw'a-matafari mbere yo kumena beto.



IN-SITU MAXSPAN slab checklist:

- mount the timber formwork
- place the beams reinforcements and connect them the wall tie-beam waiting bars
- add spacers to the reinforcement bars
- position the MAXSPAN clay pots in between the reinforcement bars
- check levels and alignments
- add top screed wire mesh within the beams reinforcements
- add spacers underneath the screed mesh
- cast the concrete beams and top screed at the same time
- complete the slab by finishing the top concrete surface according to the desired finish level
- remove formwork only after 28 days

Amabwiriza ya dare ya hurudi bameneyeho (in-situ):

- kubaka kofuraje y'ibiti
- gushyiraho ibyuma bya putere no kubihuza /kubifatanya nibyo muri putere/korone zo mu rukuta
- gushyira karabeto mu byuma
- gushyira hurudi hagati y'ibyuma
- gusuzuma indara no kuzinyorosha/kuzishyira kumurongo
- gushyiraho agatanda ko hejuru k'ibyuma kakanafata n'ibyuma bya putere
- gushyira karabeto munsu yagatanda k'ibyuma /hagati y'agatanda na hurudi
- kumena beto ya za putere niyagatanda ko hejuru icyarimwe
- kurangiza kumena beto hakorwa na finisaje bitewe n'urugero rwa finisaje yifuzwa
- gukuraho igikwa/Kofuraje nibura nyuma y'iminsi 28



14

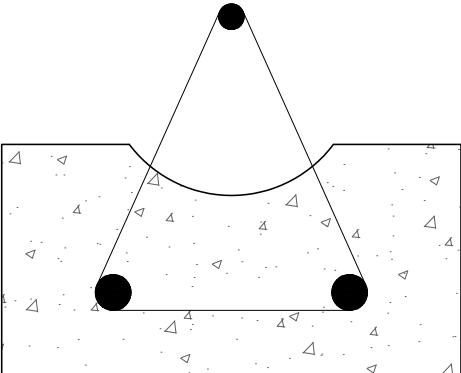
MAXSPAN precast SLAB: the precast beams
Dare ya Hurudi: putere zarakozwe mbere

PRECAST BEAMS checklist:

- position the metallic formworks on an even surface
- double check leveling
- cut, bend and tie together re-bars and stirrups as per structural specifications
- position the reinforcement bars
- the size of the bars must be confirmed by a structural engineer
- add concrete spacers below and side of the re-bars
- cast the concrete and vibrate with a mechanical vibrator
- scratch portion of the concrete below the top re-bar
- remove from formwork only after 14 days and use only after 28 days

Amabwiriza kuri PUTERE ZAKOZWE MBERE

- gushyira iforomo zibyuma ahantu haringaniye
- kongera gusuzuma indara
- gukata no kuzinga ibyuma hakurikijwe ibishushanyo byagenwe
- gushyira ibyuma mu myanya yabyo
- umurambararo n'uko ibyuma bizingwa byemezwa n'umwengennyeri ubizobereye
- gushyira karabeto munsu no kumpande zibyuma
- kumena beto igatsindagirwa hakoreshejwe imashini
- gukuraho beto yo hejuru hagasigara hataringaniye kugirango izahure nindi neza
- putere bayikura mwiforomo nibura nyuma y'iminsi 7 ,nanone ibishobora kuzamurwa hejuru nibura nyuma y'iminsi 14 ariko igakomeza itezwe nibikwa.



Maxspan pre-cast beam section

kupe ya dare ya hurudi kuri putere zarakozwe mbere

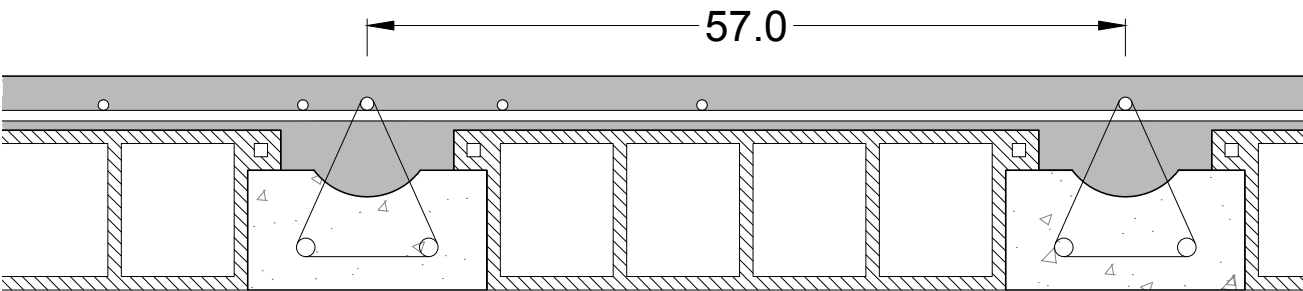


15

MAXSPAN precast SLAB - Dare ya Hurudi - putere zarakozwe mbere

Dry installation of pre-cast reinforced concrete beams and MAXSPAN clay pots.
The slab is then finished with 4cm of concrete screed.

Gushyira putere zakozwe mbere mu myanya yazo hanyuma ugashiraho hurudi. Gushyiraho agatanda ko hejuru kibyuma hanyuma dare ikarangizwa no kumena beto ifite cm 4 na finisaje.



Maxspan beams spacing - Intera hagati ya putere za hurudi

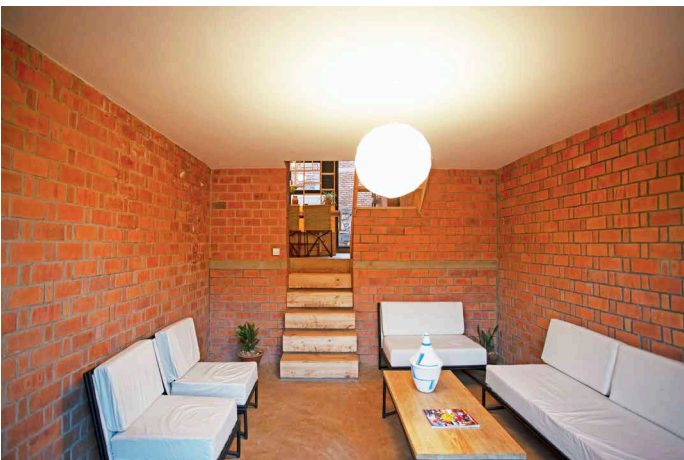
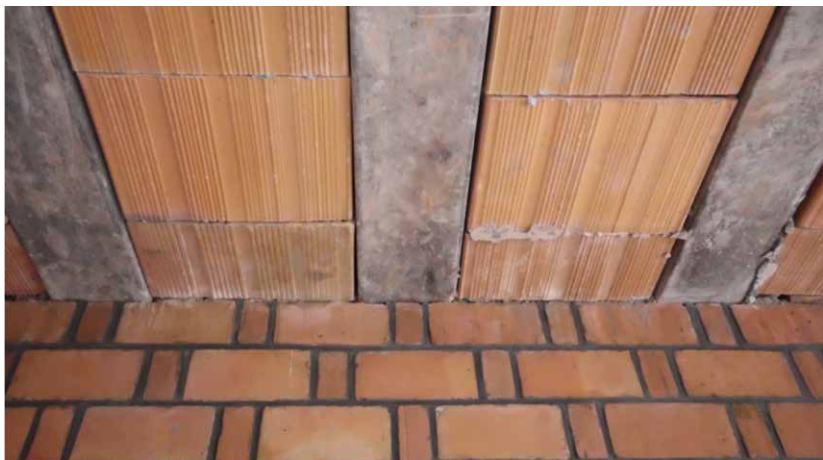


PRECAST SLAB checklist:

- mount the timber formwork
- hoist the pre-cast beams over formwork
- place MAXSPAN clay pots and check alignments
- add top screed wire mesh within the beams reinforcements
- add spacers underneath the screed mesh
- cast the top concrete screed
- complete the slab by finishing the top concrete surface according to the desired finish level
- remove formwork only after 28 days

Amabwiriza kuri Dare ya Hurudi

- kubaka cofuraje mu biti (gutega dare)
- kuzamura putere hejuru kuri kofuraje
- gushyiraho urudi hakanagenzurwa ko ziri kumurongo umwe
- gushyiraho agatanda kibyuma ko hejuru kakanafatana n'ibyuma bya putere
- gushyira karabeto munsu yagatanda k'ibyuma
- kumena beto ya kushe yo hejuru
- dare irangira hakorwa finisage ya kushe yo hejuru nanone bitewe n'urugero finisaje ikeneweho
- kofurage ikurwaho nibura nyuma y'iminsi 28



www.madeingreatlakes.com



Schweizerische Eidgenossenschaft
Confédération suisse
Confederazione Svizzera
Confederaziun svizra

**Swiss Agency for Development
and Cooperation SDC**

skat Swiss Resource Centre and
Consultancies for Development

PROECCO **PRO**moting **E**mployment through
Climate Responsive **CO**nstruction